



when you get here you understand

## GET TECHED: GET IN TOUCH WITH YOUR FUTURE

LEARNING SUPPORT SERVICES  
DISABILITY SERVICES

### WHO, WHAT, WHERE, WHEN, WHY & HOW

- **Accessibility Consultants: Wendy Thurston & Mary Ellen Lickfold**
- **Assistive Technology: Personalized assessments, training and support**
- **Library Room 1006V**
- **All year around from 8:30-4:30**
- **Ensure best the best possible technology and determine ease of use to ensure technology supports learning strengths and bypasses disability. Find your best fit!**
- **Referral from Disability Services Coordinator or Learning Skills Coordinator**

## WHO USES ASSISTIVE TECHNOLOGY?



**EVERYBODY**

**EVERYWHERE**



## DIFFERENT STROKES FOR DIFFERENT FOLKS



## THE CASE AGAINST ASSISTIVE TECHNOLOGY

There are so many misconceptions about Assistive Technology and people with disabilities. There are, in fact, many [websites](#) designed to address this very issue, the majority designed and posted by people with disabilities.



**WHAT DOES ASSISTIVE TECHNOLOGY  
MEAN TO YOU?**



## FORMAL DEFINITIONS FOR AT

• **Assistive Technology (AT)** is "any item, piece of equipment, or product system whether acquired commercially off the shelf, modified or customized, that is used to increase, maintain, or improve functional capabilities of individuals with disabilities."

(Individuals with Disabilities Education ACT (IDEA) 20, USC, Chapter 33, Section 1401 (25) US)

• Any item, piece of equipment or system that helps bypass, work around or compensate for learning difficulties.

• A definition of assistive technology may be a system of no-tech, low-tech, and high-tech tools and strategies that match a person's needs, abilities, and tasks.

• A tool to assist in the accomplishment of tasks that would otherwise be difficult or impossible to complete



A large, stylized "HELP!" sign. The word "HELP!" is written in a bold, yellow, sans-serif font with a thick black outline and a red drop shadow. The sign is set against a black octagonal background with a red border.

A large, stylized "YOURSELF" sign. The word "YOURSELF" is written in a bold, yellow, sans-serif font with a thick black outline and a red drop shadow. The sign is set against a black rectangular background with a red border.



## What is the **intent** of assistive and adaptive technology devices and services?

**Assistive and adaptive technologies (AT):** supports the learning strengths of individuals with disability, ultimately bypassing the disability and supporting your learning strengths, which creates a level playing field; AT helps you work around, or compensate for the disability, increasing independence, participation and potential.

Often, for people with disabilities, accomplishing daily tasks such as communicating with others, going to school or work, or participating in activities can be a challenge. Assistive Technology (AT) devices are tools to help overcome those challenges and enable people living with disabilities to enhance and have access to a quality of life, that may otherwise not be known, and lead more independent lives.



## TAKE CHARGE

- It's your life, make it a good one!
- Take advantage of the available services and technology!
- Make the most out of you!
- Put your best foot forward!
- Learn, Learn, Learn!
- Do it your way!
- Have fun!
- Share the experience!



## ASSISTIVE TECHNOLOGY (AT) ASSESSMENT

- Very Important– Why?
  - Trial various technology
  - Find your best fit
  - Reduce “Abandonment”
- Be prepared to spend time trial various AT– Why?
  - Thorough investigation
  - Apply variety of features on study materials
  - Agree on the best fit
- Research – Why?
  - You may already have technology that supports learning needs e.g. cell phone, laptop, ipod, ipad – accessibility tools and [free apps](#)
- Referral
  - You must be referred to receive an AT demonstration, assessment and/or training by one of our Disability Services Coordinators or our Learning Skills Coordinator

## AT TRAINING

**Structured and intentional Assistive Technology Training is essential to achieving maximum potential!**



## LEARNING DISABILITY

### •Learning Disability– Input (How info is taken in)

- Perception
- Auditory
- Visual
- Tactile

### •Learning Disability– Output (How you show what you know)

- [Organization of thoughts and understanding of logical progression](#)
- Oral expression
- Demonstration (Project demonstrating what is learned)

### •Learning Disability– (Integration)

- How new info is taken in, understood and linked to old info
- Concept formation
- How multiple ideas are combined



## TYPES OF DISABILITY CONT'D

- Cognitive
  - Think, concentrate, formulate ideas, reason and remember (Brain injury or Intellectual)
- Dyscalculia – Math calculations
- Dysgraphia – Expressing thoughts in writing
- [Dyslexia](#) – Expression, reading, spelling listening, math, organization
- Mental health disorder
- Autism



## TYPES OF DISABILITY CONT'D

- Communication
- Blind/Low vision
- Deaf/Hard of hearing
- Attention Deficit (ADD/ADHD)
  - Inattention, hyperactivity, impulsivity/combined
- Physical Disability
  - Dexterity (Fingers, arms, hands)
  - Mobility– Wheelchair, walking aids



## NO TECH

Large  
Print



QUIET SPACE  
AND  
ENOUGH TIME



# LOW TECH

**RDC**

# HI TECH

It comes increasingly important for success in today's schools. Teachers are no longer viewed as the sole purveyors of academic information, and preparation for lifelong, independent learning is believed to be a fundamental goal of education. Acquisition of effective study strategies is consi-

**RDC**

## AT FOR SPECIFIED TASKS

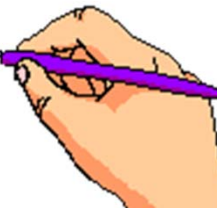
- Written Language Technologies
- Attention
- Mobility
- Reading Technologies
- Organization/Memory Technologies
- Listening Technologies
- Vision Technologies
- Communication Technology



## RDC AT FOR THE DISABILITY

### ATTENTION AND DISTRACTIBILITY

- Interactive software: Kurzweil 3000, Read & Write Gold, Inspiration
- Echo Pen
- Digital Recorder
- Scheduling Hardware/Software
- Organizer: Paper, Phone, ipad, etc.
- Noise cancelling headphones
- Alone and/or quiet space
- Extra time



## RDC AT FOR THE DISABILITY

### ORGANIZATION AND MEMORY

- Inspiration
- Kurzweil 3000
- Read and Write Gold
- EverNote
- Cue Cards
- Concept Mapping
- MS Office Suite-One Note



## RDC AT FOR THE DISABILITY

### WRITTEN LANGUAGE

- Speech Recognition
- Keyboard/Computer
- Brainstorm/Outline/Inspiration
- Word Prediction/Read & Write Gold
- Graphic Organizer
- Spell/Grammar Check
- Mouse
- Note-taker
- Echo Pens



## RDC AT FOR THE DISABILITY

### READING

- Scan and Read (OCR) software
- E-reader
- Windows
- Mac products
- Digital Recorders
- Reading Pens
- Intel Reader
- Zoomtext
- Audio Books/Alternate Format Text



## AT FOR THE DISABILITY

### VISION

- Zoomtext with reader
- CCTV
- Intel Reader
- Jaws
- Coloured overlays
- Kurzweil 1000
- Jordy/Flipper Port
- Magnification
- Accessibility Tools – PC/MAC
- Braille



## RDC AT FOR THE DISABILITY

### HEARING

(Deaf and Hard of Hearing)

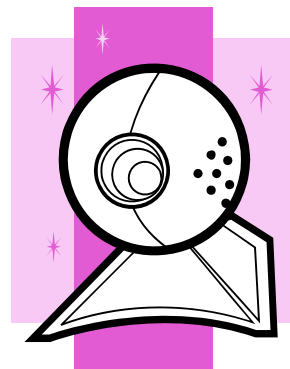
- FM System
- Pocket Talker
- CART Services
- Sign Language Interpreter



## RDC AT FOR THE DISABILITY

### MOBILITY

- Dragon
- Speak Q
- Eye Tracker Pro
- Half-Qwerty Keyboard
- Word Prediction software
- Dwelling software
- Online keyboard
- Ergonomic mouse
- Portable keyboard/notebook
- Clip boards
- Non-slip materials



## RDC AT FOR THE DISABILITY

### SPEECH AND COMMUNICATION

- Augmentative communication device
- Picture based systems
- Message mates



voice-output communication device

RDC

## SELF-ADVOCACY

The assistance and adaptation of technology are designed to help the individual have equal access to learning opportunities, make life easier and more manageable and gain employment in your area of choice.



RDC

## THANK YOU FOR COMING

**In the past, AT was often a demo/train approach, typically for persons with physical disabilities. Today, AT is more likely integrated into the person's daily life in many ways including assisting in education and employment.**



**You've got guts!**



## BIBLIOGRAPHY/RESOURCES

Association of University Centres on Disabilities, "Making Accommodation Possible Through Assistive Technology Today" Sue Lin, Karla Kmetz

<http://www.nuance.com/talk/>

<http://www.apr.gc.ca/wat/wb12200E.asp?Lt=D>

[http://www.texthelp.com/videotours/rw10marketing/intro/intro\\_stream\\_us.html](http://www.texthelp.com/videotours/rw10marketing/intro/intro_stream_us.html)

<http://www.youtube.com/watch?v=-Kh4Tpc9jfk>

<http://www.aisquared.com/zoomtext/>

<http://www.youtube.com/watch?v=7cayMkVidpc>

<http://www.youtube.com/watch?v=0s5iqRpWH9c&feature=related>

<http://www.apr.gc.ca/wat/wb12200E.asp?Lt=D>

[http://www.disabilityissues.ca/english/Link\\_docs/LDResour.pdf](http://www.disabilityissues.ca/english/Link_docs/LDResour.pdf)

[http://en.wikipedia.org/wiki/Learning\\_disability](http://en.wikipedia.org/wiki/Learning_disability)

<http://www.proloquo2go.com/Manual/article/introductory-videos>

<http://www.148apps.com/top-apps/top-free-ipad-apps/>

[http://www.kurzweilededu.com/videos/Change\\_Reading\\_Options.html](http://www.kurzweilededu.com/videos/Change_Reading_Options.html)

<http://www.148apps.com/top-apps/top-free-ipad-apps/>

<http://blog.tysonwilliams.com/2011/03/02/video-new-evernote-for-iphone/>

[http://www.donjohnston.com/media/flash/case\\_against\\_technology/index.html](http://www.donjohnston.com/media/flash/case_against_technology/index.html)

<http://www.youtube.com/watch?v=R2z0eRgqLw&feature=related>

<http://www.apr.gc.ca/wat/wb12200E.asp?Lt=D>

